

<b>TITLE</b>	<b>Wokingham Clinical Commissioning Group</b>
<b>FOR CONSIDERATION BY</b>	Health Overview and Scrutiny Committee on 24 July 2012
<b>WARD</b>	None Specific



WOKINGHAM  
CLINICAL COMMISSIONING GROUP

## Wokingham Clinical Commissioning Group



WOKINGHAM  
CLINICAL COMMISSIONING GROUP

### What is a CCG?

- Clinical Commissioning Group
- CCG's are the government's new NHS organisation structure for the delivery of health services in England.
- Clinicians and health managers working closely together.
- Patients very involved.

2

## WOKINGHAM CCG



WOKINGHAM  
CLINICAL COMMISSIONING GROUP

- Will become a statutory NHS body from April 2013
- Is a practice membership organisation
- Budget £170 million pa
- Board meetings in public
- Board: GPs, Nurse, Consultant, 2 lay members

### Membership:

- Burma Hill
- Brookside
- Cedar House
- Finchampstead
- Loddon Vale
- New Wokingham Road
- Parkside
- Rectory Road/Tudor House
- Swallowfield
- Twyford
- Wargrave
- Wilderness
- Woodley
- Woosehill

3

## Keeping in Touch



WOKINGHAM  
CLINICAL COMMISSIONING GROUP

We value your feedback and will try to be as accessible as possible :

- Patient groups
- Lay representatives
- Website
- Feedback to your own GP
- Social Networks
- Healthwatch
- Local council
- Regular public feedback surgeries

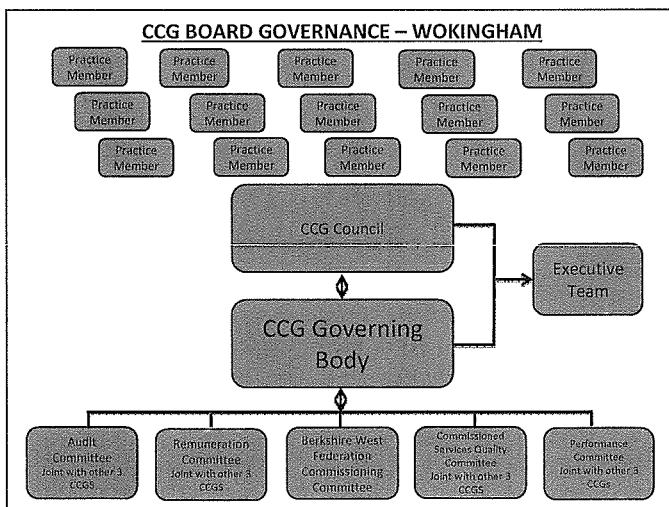
4

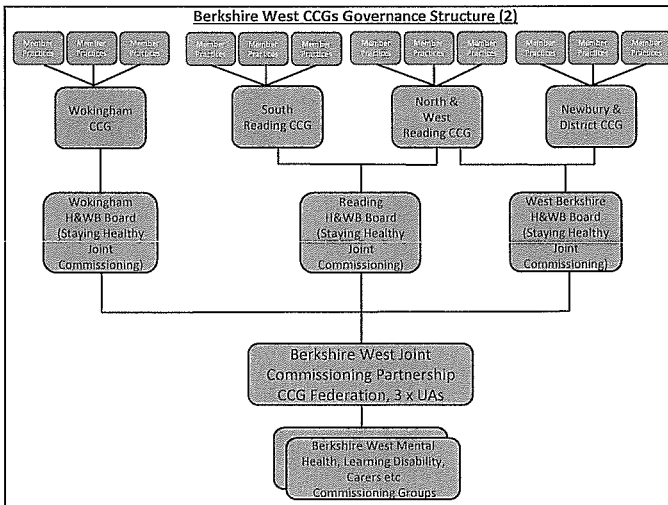
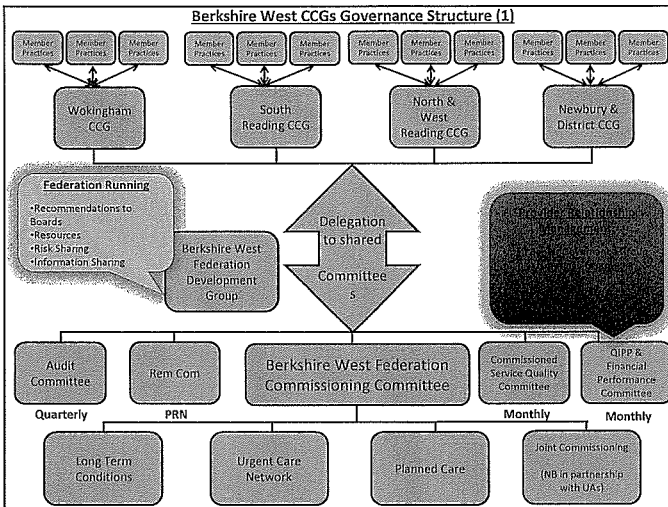
## Key People on Board



- Chairman: Dr Stephen Madgwick
- Patients Representative
- Second Layperson
- GP Representatives
- Accountable Officer: Dr Cathy Winfield
- Chief Financial Officer
- Hospital Consultant
- Nurse

5





## Developments So Far



WOKINGHAM  
CLINICAL COMMISSIONING GROUP

- The Authorisation Application has been submitted & are now awaiting approval
- The Wokingham CCG site visit has been scheduled to take place on Wednesday 26<sup>th</sup> September
- Outcomes of the authorisation assessments are due in October
- CCG's to go live 1<sup>st</sup> April 2013

9

## Commissioning



WOKINGHAM  
CLINICAL COMMISSIONING GROUP

- - the process of planning, designing, paying for, and monitoring NHS services
- Clinical Commissioning Groups (or CCGs) will be responsible for commissioning:
  - most hospital care, community services and mental health services
- National Commissioning Board will be responsible for commissioning:
  - Dentists, eye tests, most GP practice services and "specialist" commissioning

10

## Plans Developed Locally



WOKINGHAM  
CLINICAL COMMISSIONING GROUP

- Working with the other 3 CCG's in Berkshire West
- Programme Boards created
- Planned Care
- Urgent Care
- Long Term Conditions
- Joint Commissioning (with Local Authorities)

11

## What We've Been Doing



WOKINGHAM  
CLINICAL COMMISSIONING GROUP

- Community reablement programme
- Reducing paediatric admissions
- End of life care
- LTC programmes for heart failure, COPD, diabetes
- Community Spinal Service
- New autism diagnostic pathway

122

## Plans for the Next year & near Future



WOKINGHAM  
CLINICAL COMMISSIONING GROUP

- Good Start to life:
  - E.g. Family Nurse Partnership
- Promotion of healthy lifestyles
- Excellent services for the elderly
- Expand Community Services
- Improving Dementia care
- Maintain good hospital services

133



WOKINGHAM  
CLINICAL COMMISSIONING GROUP

## Thank You

144